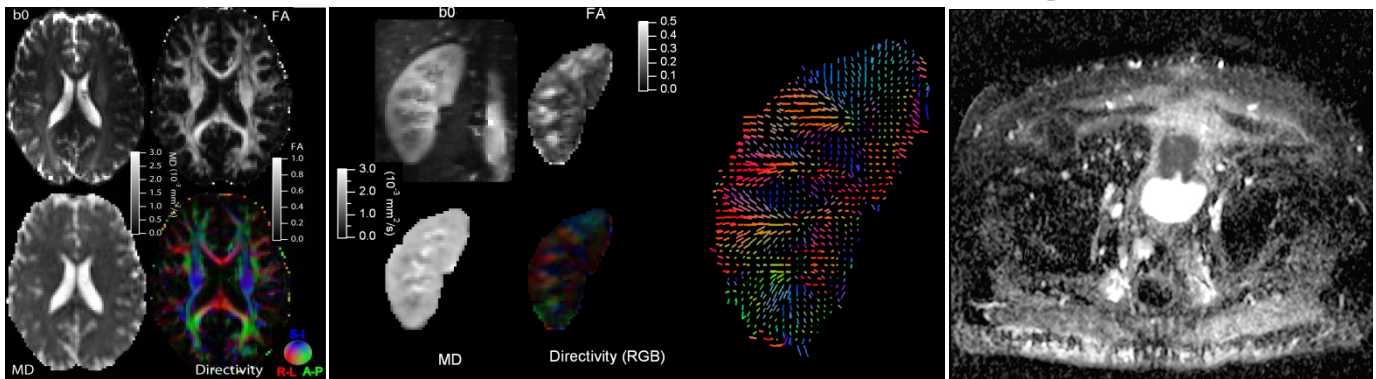


Best in Practice: Diffusion-weighted MRI



Principles of diffusion-weighted MRI will be presented through a collaborative series of lectures including an MRI technologist, MRI physicist, and radiologists. The objectives of these presentations are as follows:

- ✚ To understand the MRI physics of diffusion-weighted imaging (DWI) and its variants
- ✚ To understand the control parameters for DWI exams in different anatomies
- ✚ To understand the clinical applications for DWI and diffusion tensor imaging in the brain
- ✚ To understand the principles of advanced diffusion imaging techniques in the brain
- ✚ To understand the role of DWI in the evaluation of liver and kidney diseases
- ✚ To understand the role of DWI in the detection and characterization of malignancies of the male and female pelvis

Speakers:

Eric E. Sigmund, Ph.D., *Assistant Professor of Radiology, Department of Radiology*

Mervin Wauchope, R.T. (ARRT), *MRI Technologist, Department of Radiology*

Yvonne W. Lui, M.D., *Assistant Professor and Section Chief of Neuroradiology, Department of Radiology*

Hersh Chandarana, M.D., *Assistant Professor of Radiology, Department of Radiology*

Andrew B. Rosenkrantz, M.D., *Assistant Professor of Radiology, Department of Radiology*

Wednesday, January 18, 2012

Skirball Seminar Room, 4th Floor

5:00 pm – 6:00 pm

NYU School of Medicine

550 First Avenue, New York City

This lecture is hosted by Michael P. Recht, M.D. Chairman, Department of Radiology
For more information, call 212-263-3471